

**CLIENT:**

Zakládání staveb, a.s.

**REALIZATION PERIOD:**

2008

**PRICE:**

60,4 mil. CZK

**VOLUMES:**

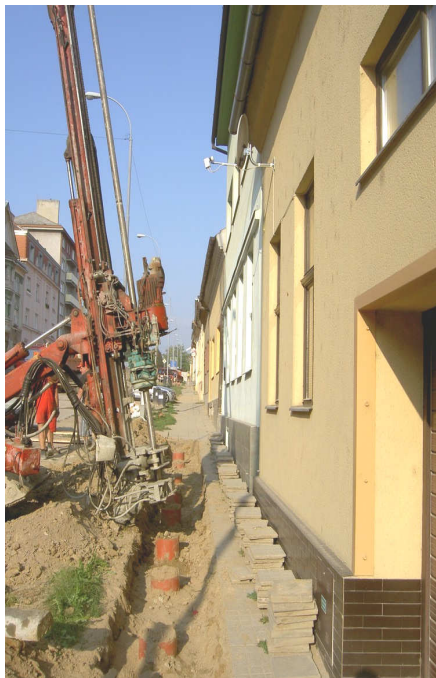
JG (underpinning) ..... 2 959 m  
(diam. 80 cm, 176 columns)

Jet-grouting (shafts)..... 5 397 m  
(diam. 60+80 cm, 592 columns)

**DESCRIPTION:**

Underpinning of buildings in the proximity of tunnel excavation. Using of 12° inclined jet-grouting columns of diameter 0.8 m and length up to 30 meters. Columns reinforced by steel tube (108/16 mm).

Circular shaft (diam. 9 m) retaining structure made in two rows jet-grouting columns (60+80 cm). The shafts used as access for compensation grouting equipment. JG works on limited space.



*JG works – underpinning of existing buildings*



*JG works – circular shafts*



*Inner row (JG columns) of circular shaft*