

KEMA Skalná

Double containment of waste dump
Jet-grouting, cut-off diaphragm wall

Reference sheet

CLIENT:

KEMAT, s.r.o.
Contact: Jan Brožek

REALIZATION PERIOD:

1998

PRICE:

42 mil. CZK

VOLUMES:

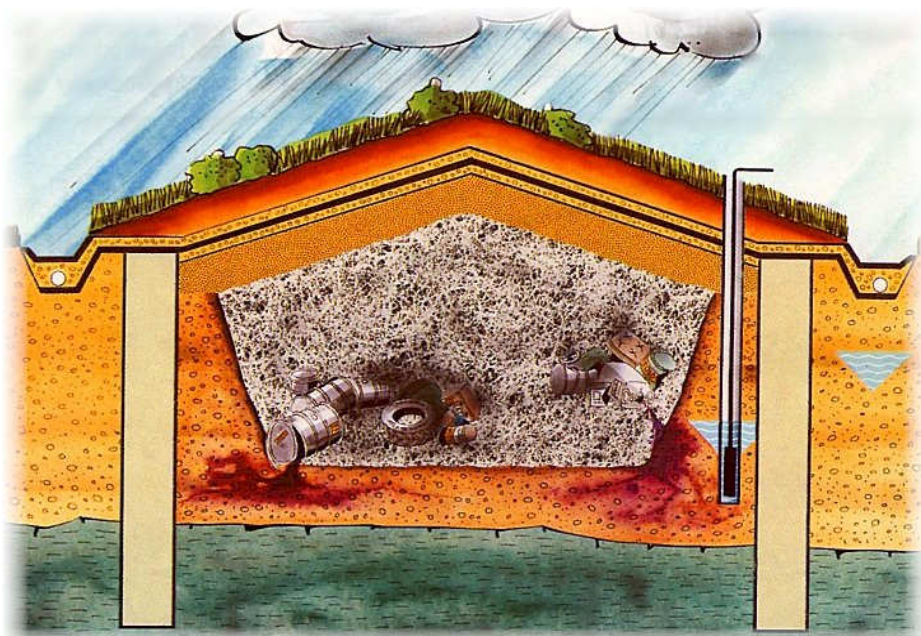
Cut-off DW 7 795 m²
(depth 15 – 17 m, thick. 0,6 m)
Jet-grouting barrier..... 600 m²
Tar extraction 500 m³
In situ solidification 300 m³
Capping 10 000m²



Tar lagoon

DESCRIPTION:

Ecological remediation of an old municipal waste dump mixed with tar.
Introductory study and additional investigation.
General contract including design.



Geocontainment - Principle

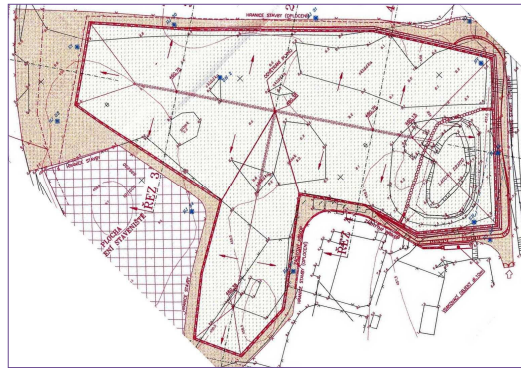
KEMA Skalná

Double containment of waste dump

Czech Environmental Remediation Project Prize 1994



Before



Situation of waste dump



After

Partial extraction of tar



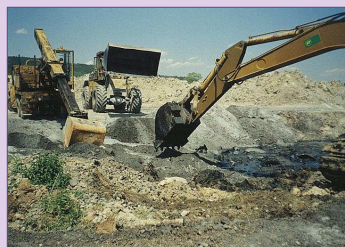
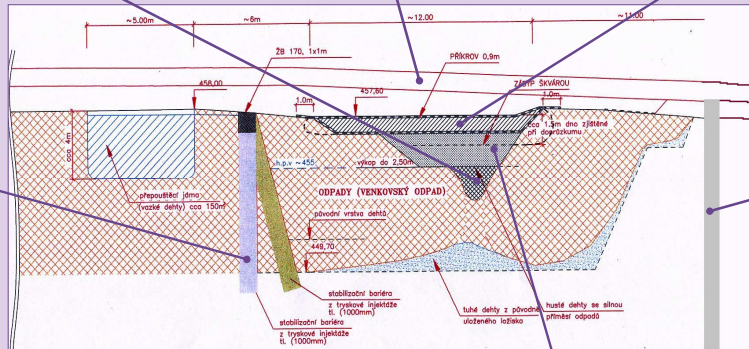
External capping



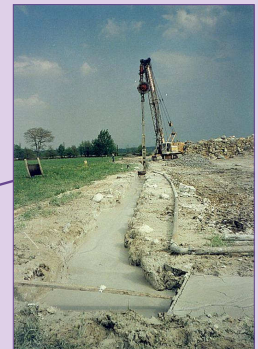
Internal cover



Jet-grouted internal barrier



In-situ solidification of tar remains



External cut-off